

## **PART NUMBER**

**CDPBUCWH**

## **MODEL DESCRIPTION**

Push Button Universal Dimmer, Clipol, 220-240VAC, 50/60Hz, 2-300W, White



## **TECHNICAL DATA**

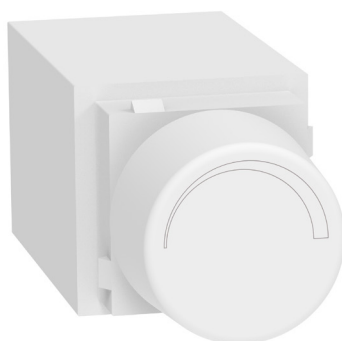
<b>PART NUMBER</b>	CDPBUCWH
<b>DESCRIPTION</b>	Push Button Universal Dimmer, Clipol, 220-240VAC, 50/60Hz, 2-300W, White
<b>SUPPLY VOLTAGE</b>	220-240VAC
<b>CURRENT RATING</b>	2-300W
<b>COLOUR</b>	White
<b>COMPATIBILITY</b>	Suits CSW1P1WH & CSW1VP1WH
<b>COMPLIANCE</b>	AS 60669.2.1:2020

## PART NUMBER

**CDRTECWH**

## MODEL DESCRIPTION

Rotary Trailing Edge Dimmer, Clipol, 220-240VAC, 50/60Hz, 2-300W, White



## TECHNICAL DATA

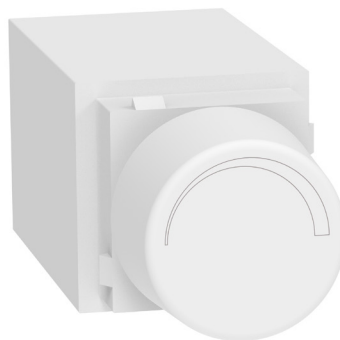
<b>PART NUMBER</b>	CDRTECWH
<b>DESCRIPTION</b>	Rotary Trailing Edge Dimmer, Clipol, 220-240VAC, 50/60Hz, 2-300W, White
<b>SUPPLY VOLTAGE</b>	220-240VAC
<b>CURRENT RATING</b>	2-300W
<b>COLOUR</b>	White
<b>COMPATIBILITY</b>	Suits CSW1P1WH & CSW1VP1WH
<b>COMPLIANCE</b>	AS 60669.2.1:2020

## **PART NUMBER**

**CDRLECWH**

## **MODEL DESCRIPTION**

Rotary Leading Edge Dimmer, Clipol, 230-240VAC, 50Hz,10-450W, White



## **TECHNICAL DATA**

<b>PART NUMBER</b>	CDRLECWH
<b>DESCRIPTION</b>	Rotary Leading Edge Dimmer, Clipol, 230-240VAC, 50Hz,10-450W, White
<b>SUPPLY VOLTAGE</b>	230-240VAC
<b>CURRENT RATING</b>	10-450W
<b>COLOUR</b>	White
<b>COMPATIBILITY</b>	Suits CSW1P1WH & CSW1VP1WH
<b>COMPLIANCE</b>	AS/NZS 60669.2.1:2013, AS/NZS 60669.1:2013