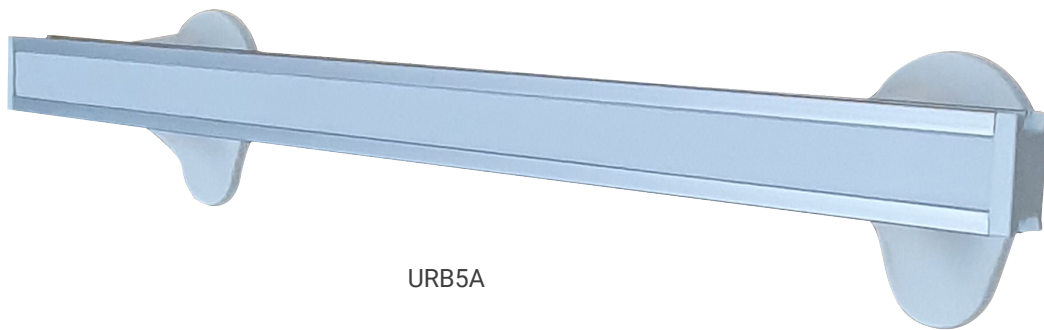


PART NUMBER

URB3, URWB, UREC, URJ

MODEL DESCRIPTION

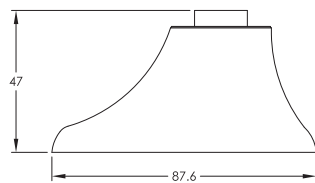
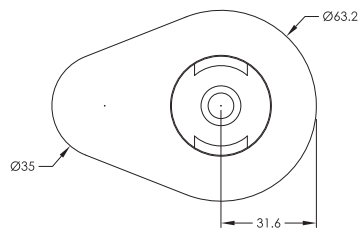
Unirail Equipment Mounting Rail



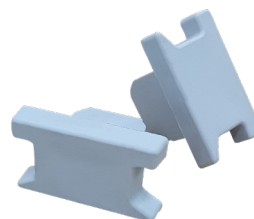
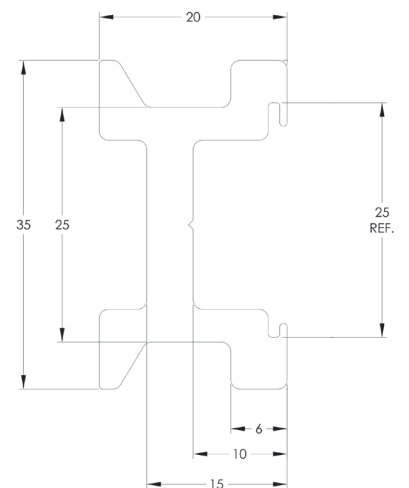
URB5A



URWB



URB3



UREC



URJ

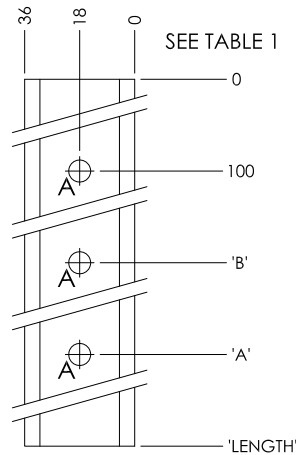
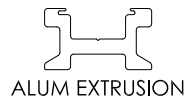
TECHNICAL DATA

| | | |
|--------------------|-----------------------|--|
| PART NUMBER | URB3, URWB, UREC, URJ | |
| DESCRIPTION | URB3 | 3.0 metre length of clear anodised, extruded aluminium equipment mounting rail |
| | URWB | Wall mounting bracket, light grey PVC |
| | UREC | End cap - light grey nylon |
| | URJ | Joiner plate |
| COMPLIANCE | AS2896 | |

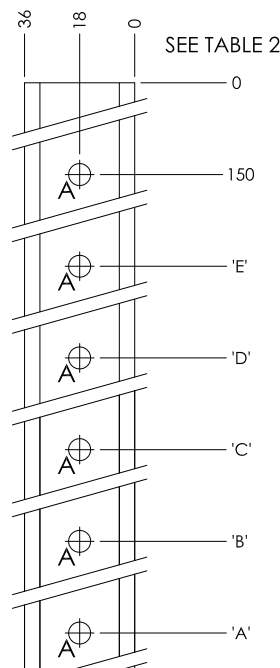
UNIRAIL ASSEMBLY KITS

Kits include:

- Unirail cut to length
- Pre-punched fixing holes
- Correct number of Wall Brackets to suit Unirail length
- 2 x End Caps
- Cover Strip



| TABLE 1 FOR LENGTH UP TO 1200mm | | | | |
|------------------------------------|--------|--------------|---------|---------|
| P/N | LEGNTH | No of A HOLE | DIM 'A' | DIM 'B' |
| URB3A | 300 | 2 | 200 | |
| URB3.5A | 350 | 2 | 250 | |
| URB4A | 400 | 2 | 300 | |
| URB4.5A | 450 | 2 | 350 | |
| URB5A | 500 | 2 | 400 | |
| URB5.5A | 550 | 2 | 450 | |
| URB6A | 600 | 2 | 500 | |
| URB6.5A | 650 | 2 | 550 | |
| URB7A | 700 | 2 | 600 | |
| URB7.5A | 750 | 2 | 650 | |
| URB8A | 800 | 2 | 700 | |
| URB8.5A | 850 | 3 | 750 | 425 |
| URB9A | 900 | 3 | 800 | 450 |
| URB9.5A | 950 | 3 | 850 | 475 |
| URB10A | 1000 | 3 | 900 | 500 |
| URB10.5A | 1050 | 3 | 950 | 525 |
| URB11A | 1100 | 3 | 1000 | 550 |
| URB11.5A | 1150 | 3 | 1050 | 575 |
| URB12A | 1200 | 3 | 1100 | 600 |



| TABLE 2 FOR LENGTH 1300 -- 3000mm | | | | | | | |
|--------------------------------------|--------|--------------|---------|---------|---------|---------|---------|
| P/N | LEGNTH | No of A HOLE | DIM 'A' | DIM 'B' | DIM 'C' | DIM 'D' | DIM 'E' |
| URB13A | 1300 | 3 | 1150 | 650 | | | |
| URB14A | 1400 | 3 | 1250 | 700 | | | |
| URB15A | 1500 | 3 | 1350 | 750 | | | |
| URB16A | 1600 | 4 | 1450 | 1020 | 580 | | |
| URB16.5A | 1650 | 4 | 1500 | 1050 | 600 | | |
| URB17A | 1700 | 4 | 1550 | 1080 | 620 | | |
| URB18A | 1800 | 4 | 1650 | 1150 | 650 | | |
| URB19A | 1900 | 4 | 1750 | 1220 | 680 | | |
| URB20A | 2000 | 4 | 1850 | 1280 | 720 | | |
| URB21A | 2100 | 5 | 1950 | 1500 | 1050 | 600 | |
| URB22A | 2200 | 5 | 2050 | 1575 | 1100 | 625 | |
| URB23A | 2300 | 5 | 2150 | 1650 | 1150 | 650 | |
| URB24A | 2400 | 5 | 2250 | 1725 | 1200 | 675 | |
| URB25A | 2500 | 5 | 2350 | 1800 | 1250 | 700 | |
| URB26A | 2600 | 5 | 2450 | 1875 | 1300 | 725 | |
| URB27A | 2700 | 5 | 2550 | 1950 | 1350 | 750 | |
| URB28A | 2800 | 6 | 2650 | 2150 | 1650 | 1150 | 650 |
| URB29A | 2900 | 6 | 2750 | 2230 | 1710 | 1190 | 670 |
| JRB30A | 3000 | 6 | 2850 | 2310 | 1770 | 1230 | 690 |



THE ESCO GROUP OF COMPANIES



modempak

ESCO INDUSTRIES

89 Egerton St (Cnr Fariola & Egerton)
PO Box 6193, Silverwater
NSW 2128 AUSTRALIA

MODEMPAK NZ

Unit 11/273 Neilson St, Onehunga
AUCKLAND 1061 NEW ZEALAND

T 1300 879 363 F 1300 879 364

customer.service@escoindustries.com.au
www.escoindustries.com.au

D +64 9 526 1880 Freccall 0800 663 367

customer.service@modempak.co.nz
www.modempak.co.nz