

esco
industries

modempak

EnduraBox

Floor Box Range



EnduraBox

Floor Boxes are utilised in a variety of office, commercial and industrial applications. The EnduraBox range is designed to provide convenient access for power and data connections and can be installed in new construction environments or retrofitted into an existing floor location.



Soft Close Lid

EnduraBox range has a number of model options with a Soft Close Lid feature, this design incorporates dampening hinges to minimise the risk of cable damage due to accidental closing of the floor box lid.

Flexibility

EnduraBox range is available in a wide variety of options. With 64mm and 98mm deep options along with Stainless Steel, Plastic and Heavy Duty lid options, your application needs are covered. There are also additional models for square, rectangle or round mounting applications.



ENDURABOX FLOOR BOX RANGE

ENDURABOX64 RANGE / 64MM DEEP - 4 POWER, 6 DATA - 257 X 251 X 64MM



EB6SFB4P6D



EB6SRB4P6D



EB6DCS4P6D



EB6PRB4P6D

PART NUMBER	DESCRIPTION
EB6SFB4P6D	EB64 Box, Stainless Steel Flush Soft Close Lid Bevel Surround, 4 x Auto Switched Power, Provision to Mount 6 x Data/Mech (Complete with Bezel)
EB6SRB4P6D	EB64 Box, Stainless Steel Recess Soft Close Lid Bevel Surround, 4 x Auto Switched Power, Provision to Mount 6 x Data/Mech (Complete with Bezel)
EB6DCS4P6D	EB64 Box, Drop In Lid, Carpet Surround, 4 x Auto Switched Power, Provision to Mount 6 x Data/ Mech (Complete with Bezel)
EB6PRB4P6D	EB64 Box, Plastic Recess Lid Bevel Surround, 4 x Auto Switched Power, Provision to Mount 6 x Data/Mech (Complete with Bezel)

ENDURABOX64 RANGE / 64MM DEEP - 4 POWER, 8 DATA - 257 X 251 X 64MM



EB6SFB4P8D



EB6SRB4P8D



EB6DCS4P8D



EB6PRB4P8D

PART NUMBER	DESCRIPTION
EB6SFB4P8D	EB64 Box, Stainless Steel Flush Soft Close Lid Bevel Surround, 4 x Auto Switched Power, Provision to Mount 8 x Keystone Data (Excludes Bezel)
EB6SRB4P8D	EB64 Box, Stainless Steel Recess Soft Close Lid Bevel Surround, 4 x Auto Switched Power, Provision to Mount 8 x Keystone Data (Excludes Bezel)
EB6DCS4P8D	EB64 Box, Drop In Lid, Carpet Surround, 4 x Auto Switched Power, Provision to Mount 8 x Keystone Data (Excludes Bezel)
EB6PRB4P8D	EB64 Box, Plastic Recess Lid Bevel Surround, 4 x Auto Switched Power, Provision to Mount 8 x Keystone Data (Excludes Bezel)

ENDURABOX FLOOR BOX RANGE

ENDURA98 RANGE / 98MM DEEP - 257 X 251 X 98MM



EB9SFB

EB9SRB

EB9PRB

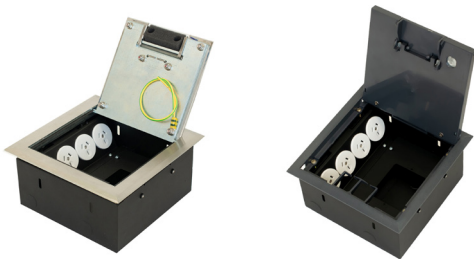
EB9SHDFB

EB9SHDRB

EB9DCS

PART NUMBER	DESCRIPTION
EB9SFB	EB98 Box, Stainless Steel Flush Soft Close Lid Bevel Surround, 4 x Provision To Mount Standard Plate
EB9SRB	EB98 Box, Stainless Steel Recess Soft Close Lid Bevel Surround, 4 x Provision To Mount Standard Plate
EB9PRB	EB98 Box, Plastic Recess Lid Bevel Surround, 4 x Provision To Mount Standard Plate
EB9SHDFB	EB98 Box, Stainless Steel Heavy Duty Flush Soft Close Lid Bevel Surround, 4 x Provision To Mount Standard Plate
EB9SHDRB	EB98 Box, Stainless Steel Heavy Duty Recess Soft Close Lid Bevel Surround, 4 x Provision To Mount Standard Plate
EB9DCS	EB98 Box, Drop In Lid, Carpet Surround - 4 x Provision To Mount Standard Plate

ENDURAMINI / 90MM DEEP - 4 POWER - 198 X 197 X 90MM



EBMSHDFB4P

EBMPRB4P

PART NUMBER	DESCRIPTION
EBMSHDFB4P	EBM Box, Stainless Steel Heavy Duty Flush Soft Close Lid Bevel Surround, 4 x Auto Switched Power, 1 x Provision To Mount Standard Plate
EBMPRB4P	EBM Box, Plastic Recess Lid Bevel Surround, 4 x Auto Switched Power, 1 x Provision To Mount Standard Plate

ENDURABOX FLOOR BOX RANGE

ENDURAR1 - RECTANGLE / 90MM DEEP - 8 POWER - 287 X 198 X 90MM



EBR1HDSFB8P2G

PART NUMBER	DESCRIPTION
EBR1HDSFB8P2G	EBR1 Box, Stainless Steel Heavy Duty Flush Soft Close Lid Bevel Surround, 8 x Auto Switched Power, 2 x Provision To Mount Standard Plate

ENDURARD - ROUND / 97MM DEEP - 307DIA X 97MM



EBRDSFB

PART NUMBER	DESCRIPTION
EBRDSFB	EBRD Box, Stainless Steel Flush Soft Close Lid Bevel Surround, 4 x Provision To Mount Standard Plate

ACCESSORIES



14470142



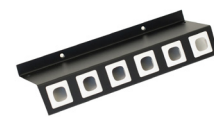
EXB91FG



14470110



14470125



14470141



14470126

COMPATIBLE	PART NUMBER	DESCRIPTION
ENDURA64, 98	14470142	EB Screed Lid
ENDURA98	EXB91FG	EB9 Expansion Box 110x250x50mm
ENDURA64	14470110	EB6 Provision to Mount 8 x Keystone Data (Excludes Bezel)
ENDURA98	14470125	EB9 Adaptor Plate To Suit 3 Phase Outlets
ENDURA64	14470141	EB6 Provision to Mount 6 x Data/Mech (Complete with Bezel)
ENDURA64	14470126	EB6 Starter Socket Sub Plate

esco industries

HEAD OFFICE

89 Egerton Street
(Cnr Fariola & Egerton)
Silverwater, NSW 2128, Australia
T: 1300 879 363
F: 1300 879 364

customer.service@escoindustries.com.au

www.escoindustries.com.au

MODEMPAK NZ

Unit 11/273 Neilson St, Onehunga
Auckland 1061, New Zealand
D: +64 9 526 1880
Freecall: 0800 663 367

customer.service@modempak.co.nz

www.modempak.co.nz

THE ESCO GROUP OF COMPANIES

esco industries MASBP MediTek modempak

All products and information listed are accurate as of 25 November 2024.