

**esco**  
medicon

# ALPHA<sup>max</sup>

## Medical Services Panel Assemblies



**esco**  
industries

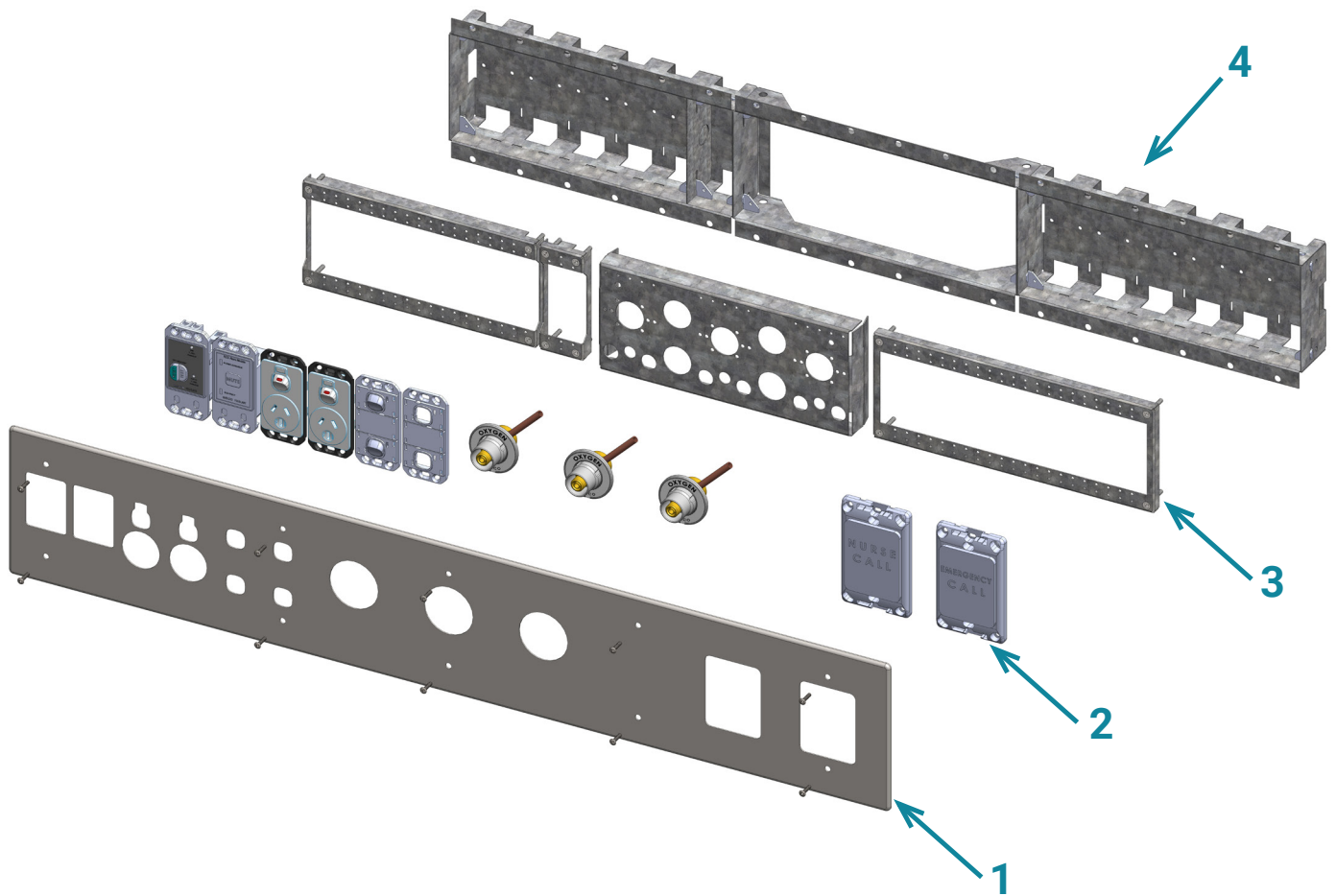
# The ESCO Industries *AlphaMax* solution provides an elegant and simple flush-mounted system for integrating a variety of services into one recessed Medical Services Panel

## Features

- Comes fully equipped and wired with required electrical components
- Includes provision to mount ESCO gas outlets (as well as other brands)
- Includes provision to mount data connections, nurse call systems and other services
- Installed after wall sheeting
- Fixed height grids - no outlet height adjustments needed for varying wall board thickness
- One-piece face plate covers various outlets (Power, Data, Medical Gas)
- Face plates have rolled edges for a tight wall seal and safety
- Face plates available in 304 brushed stainless steel or powder-coated finish
- Full services segregation behind face plate
- Permanent and indelible circuit identification solution incorporated into face plate
- Horizontal and vertical configurations available
- Sealed (pressurized environments) and non-ferrous (MRI areas) options available



# AlphaMax Assembly



**1** A one-piece removable face plate to cover a group of dissimilar outlets (e.g. Power, Data, Medical Gas) that can be removed without compromising the physical segregation of services making installation and maintenance quick and easy. A joined face plate is only required when panel length exceeds 1180mm, the join is concealed with a H-Bar Joiner for aesthetics and infection control management.

**2** Our Medical Services Panels come loaded and pre-wired with all the required ESCO electrical components as well as the provision to mount our market leading range of ESCO medical gas terminal units, data outlets, nurse call and other products.

**3** All of the service outlets are fixed to metal grids (mounting grid) which in turn are fastened within the wall box.

**4** Wall boxes installed after wall sheeting. Requires no adjustment of outlet height due to variations in wall board thickness. Each gang space features entry points at top/back & bottom/back for simple cable access. The entire back section of the gas wall box is open to maximise space for gas outlet termination.

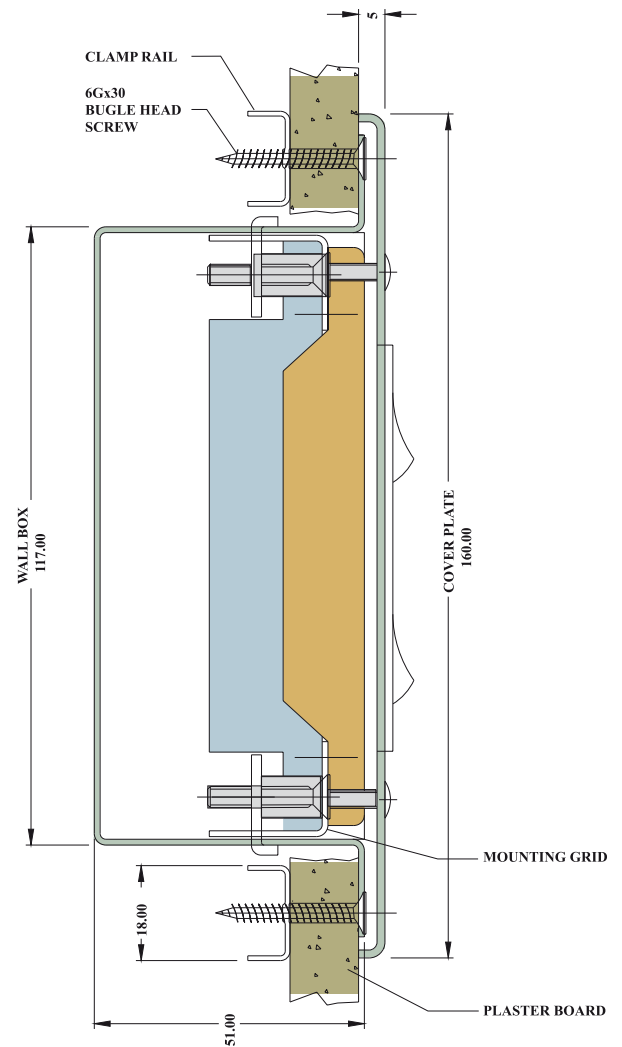
# AlphaMax Installation

AlphaMax is installed after wall sheeting (plasterboard, joinery, etc.). The layout and hole cutting is simple and requires a horizontal centreline to be marked firstly on the wall surface.

The wall box cut outs are marked and holes drilled to secure the wall box.

If the services outlet panels are positioned over wall studs, these studs will have to be partially cut away. However pre-planning of the wall framing can avoid this situation and is a must if back to back mounting of the panels is required.

For more detailed installation instructions, please [click here](#)



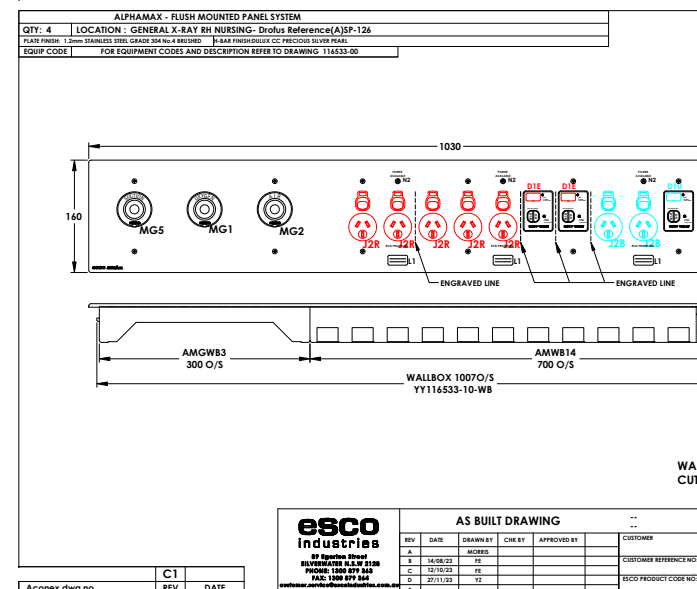
# AlphaMax Design

We appreciate everyone’s needs are different, and why the Alphamax system was designed with flexibility in mind. Our team of in-house engineers and technical sales people work with our customers to ensure the design of their medical services panels (MSPs) meets their requirements, without the need to compromise on the critical areas.

Our proprietary software allows us to ‘design on the fly’ in a live environment fast tracking the design and approval process.

Having the ability to do this in a high level of detail early in the design phase has proven to be invaluable for architects and consultants alike. They can ensure their designs are compatible with the MSP design prior to official engagement through the contractor.

We welcome the opportunity to work with you at all stages of the design process.



# esco industries

## AUSTRALIA

89 Egerton Street  
(Cnr Fariola & Egerton)  
Silverwater, NSW 2128, Australia

T: 1300 879 363

F: 1300 879 364

[customer.service@escoindustries.com.au](mailto:customer.service@escoindustries.com.au)

[www.escoindustries.com.au](http://www.escoindustries.com.au)

## NEW ZEALAND

Unit 11/273 Neilson St, Onehunga  
Auckland 1061, New Zealand

D: +64 9 526 1880

Freecall: 0800 663 367

[customer.service@escoindustries.co.nz](mailto:customer.service@escoindustries.co.nz)

[www.escoindustries.co.nz](http://www.escoindustries.co.nz)